



General Features

- Extra long life design (up to 20 years).
- Non-spillable construction and design.
- ABS containers and covers (UL94HB, UL94V-O optional).
- Safety Valve installation makes it explosion proof.
- Maximized energy density for relay rack installations.
- High quality and high reliability.
- Exceptional deep discharge recovery performance.
- Flexible design for multiple installation positions.

The SMU-M range utilizes thick grids of modern design to guarantee the design life up to 20 years. Advanced micro porous absorbent glass mat (AGM) separators minimize diffusion of oxygen into the separator, reduce float charge current and suppress corrosion of the positive grid, extending the life of the battery.

Applications

Emergency Power System
Communication Equipment
Medical Equipment

Telecom
Control Equipment
UPS

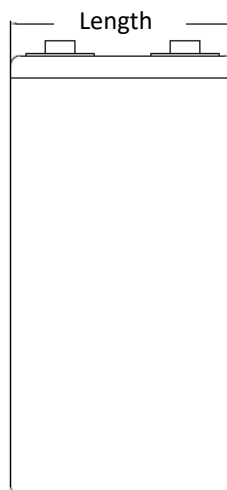
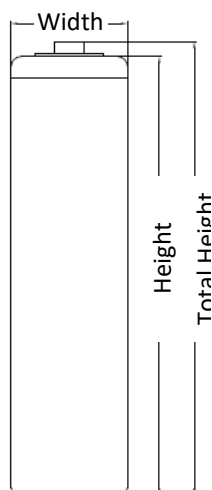
Construction

Component – Raw Material
Positive – Lead Dioxide
Negative – Lead
Container – ABS
Cover – ABS

Sealant – Epoxy Resin
Safety Valve – EPDR
Terminal – Copper
Separator – Fiber Glass
Electrolyte – Sulfuric Acid

Product Information

Cell Type	Capacity (C ₁₀ at 1.80V)	Dimensions (mm)				Number of Poles	Weight (kg)
		Length	Width	Height	Total Height		
SMU-200M	200Ah	94.5	184.5	360.5	372	2	14.3
SMU-260M	260Ah	109	184.5	360.5	372	2	17
SMU-300M	300Ah	123	184.5	360.5	372	2	19
SMU-400M	400Ah	166	184.5	360.5	372	2	26
SMU-500M	500Ah	194.5	184.5	360.5	372	2	31
SMU-600M	600Ah	223	184.5	360.5	372	4	37
SMU-800M	800Ah	154	229	555	566	4	52
SMU-1000M	1000AH	186	229	555	566	4	62
SMU-1500M	1500Ah	265.5	229	555	566	6	92
SMU-2000M	2000Ah	349	233	555	566	8	121



**For terminal spacing and dimensions please see individual product cut sheets.*

Operational Data

Design Life – Up to 20 years

Cycles – greater than 1200

Self-discharge – Capacity retention is greater than 94% after storage for 90 days (25°C)

Operational Temperature – -20°C to 50°C

Discharge Tables - Constant Current (A)

2V Cells - Final Voltage 1.94V/cell

VRLA Cell Type	Time									
	5 min	15 min	30 min	1 Hr	2 Hr	3 Hr	5 Hr	8 Hr	10 Hr	24 Hr
SMU-200M	182	147	108	76	51.7	41.6	30.6	21.8	18.4	8.8
SMU-260M	*	*	*	*	*	*	*	*	*	*
SMU-300M	274	220	163	114	77.5	62.3	46	32.8	27.6	13.2
SMU-400M	365	294	217	152	103	83.1	61.3	43.7	36.8	17.6
SMU-500M	456	367	271	190	129	104	76.6	54.6	46	22
SMU-600M	547	441	325	228	155	125	91.9	65.5	55.2	26.4
SMU-800M	582	470	386	278	191	148	107	77.4	66	30.9
SMU-1000M	727	587	483	348	239	185	134	96.7	82.5	38.7
SMU-1500M	1091	881	725	522	358	278	201	145	124	58
SMU-2000M	1454	1175	966	696	478	371	269	193	165	77.3

2V Cells - Final Voltage 1.90V/cell

VRLA Cell Type	Time									
	5 min	15 min	30 min	1 Hr	2 Hr	3 Hr	5 Hr	8 Hr	10 Hr	24 Hr
SMU-200M	203	165	122	85.6	57.2	45.2	33.1	23.4	19.5	9.08
SMU-260M	261.1	212.3	157.5	110.2	76.3	58.2	42.6	30.1	25.1	11.7
SMU-300M	304	247	184	129	85.8	67.8	49.6	35	29.3	13.6
SMU-400M	406	330	245	171	114	90.4	66.2	46.7	39	18.2
SMU-500M	507	412	306	214	143	113	82.7	58.4	48.8	22.7
SMU-600M	609	495	367	257	172	136	99.2	70.1	58.6	27.2
SMU-800M	646	517	421	310	214	173	122	86.3	72.7	34.8
SMU-1000M	808	646	536	387	268	216	153	108	90.9	43.5
SMU-1500M	1212	969	789	581	401	325	229	162	136	65.2
SMU-2000M	1615	1292	1052	774	535	433	305	216	182	86.9

2V Cells - Final Voltage 1.88V/cell

VRLA Cell Type	Time									
	5 min	15 min	30 min	1 Hr	2 Hr	3 Hr	5 Hr	8 Hr	10 Hr	24 Hr
SMU-200M	219	178	134	92.3	59.7	47.2	34	24	20	9.2
SMU-260M	*	*	*	*	*	*	*	*	*	*
SMU-300M	329	267	201	139	89.5	80.8	51	36	30.1	13.8
SMU-400M	439	356	268	185	119	94.4	68	48	40.1	18.4
SMU-500M	548	445	335	231	149	118	85	60	50.1	23
SMU-600M	658	534	402	277	179	142	102	72	60.1	27.6
SMU-800M	724	592	469	340	238	183	128	91.7	76.8	36.1
SMU-1000M	905	740	586	425	298	228	161	115	96	45.2
SMU-1500M	1358	1110	879	638	446	343	241	172	144	67.8

SMU-2000M	1811	1481	1172	850	592	457	321	229	192	90.3
-----------	------	------	------	-----	-----	-----	-----	-----	-----	------

2V Cells - Final Voltage 1.85V/cell

VRLA Cell Type	Time									
	5 min	15 min	30 min	1 Hr	2 Hr	3 Hr	5 Hr	8 Hr	10 Hr	24 Hr
SMU-200M	236	195	143	96.4	61	48.2	34.4	24.3	20.2	9.28
SMU-260M	303.7	251.1	183.6	124.1	78.5	62	44.2	31.2	26	11.9
SMU-300M	354	293	214	145	91.5	72.3	51.5	36.4	30.3	13.9
SMU-400M	472	390	285	193	122	96.4	68.7	48.6	40.4	18.6
SMU-500M	590	488	357	241	153	121	85.9	60.7	50.5	23.2
SMU-600M	708	585	428	289	183	145	103	72.8	60.6	27.8
SMU-800M	789	655	506	374	256	194	135	95.2	79.8	37.2
SMU-1000M	986	818	633	468	320	242	169	119	100	46.5
SMU-1500M	1479	1228	950	702	480	363	253	179	150	69.8
SMU-2000M	1972	1637	1266	936	640	484	337	238	200	93.1

2V Cells - Final Voltage 1.83V/cell

VRLA Cell Type	Time									
	5 min	15 min	30 min	1 Hr	2 Hr	3 Hr	5 Hr	8 Hr	10 Hr	24 Hr
SMU-200M	248	207	152	100	34.6	49.2	34.7	24.6	20.3	9.4
SMU-260M	*	*	*	*	*	*	*	*	*	*
SMU-300M	372	310	229	150	96.8	73.7	52.1	36.8	30.5	14.1
SMU-400M	496	413	305	200	129	98.3	69.4	49.1	40.6	18.8
SMU-500M	620	516	381	250	161	123	86.8	61.4	60.8	23.5
SMU-600M	744	620	457	300	194	147	104	73.7	61	28.2
SMU-800M	851	709	538	400	272	205	142	98.6	82.8	38.3
SMU-1000M	1064	886	672	500	340	256	177	123	104	47.9
SMU-1500M	1596	1328	1008	750	510	384	266	185	155	71.9
SMU-2000M	2128	1771	1344	1000	680	512	354	247	207	95.8

2V Cells - Final Voltage 1.80V/cell

VRLA Cell Type	Time									
	5 min	15 min	30 min	1 Hr	2 Hr	3 Hr	5 Hr	8 Hr	10 Hr	24 Hr
SMU-200M	266	220	160	107	37.6	50.8	35.6	25	20.8	9.6
SMU-260M	343	283.1	205.9	137.5	87	65.4	45.8	32.2	26.7	12.1
SMU-300M	400	330	240	160	101	76.2	53.3	37.5	31.1	14.4
SMU-400M	533	440	320	214	135	102	71.1	50	41.5	19.2
SMU-500M	666	550	400	267	169	127	88.9	62.5	51.9	24
SMU-600M	799	660	480	320	203	152	107	75	52.3	28.8
SMU-800M	919	770	576	424	284	211	144	99.2	83.2	38.3
SMU-1000M	1149	962	720	530	355	164	180	124	104	47.9
SMU-1500M	1723	1443	1080	795	533	396	270	186	156	71.9
SMU-2000M	2297	1924	1440	1060	710	528	360	248	208	95.8

2V Cells - Final Voltage 1.75V/cell

OPzS Cell Type	Time									
	5 min	15 min	30 min	1 Hr	2 Hr	3 Hr	5 Hr	8 Hr	10 Hr	24 Hr
SMU-200M	277	233	171	114	70.6	52.4	36.4	25.5	21.2	9.76
SMU-260M	356.6	300.3	220.1	146.7	90.9	67.4	46.8	32.8	27.3	12.6
SMU-300M	416	350	257	171	106	78.6	54.6	38.2	31.9	14.6
SMU-400M	554	467	342	228	141	105	72.8	51	42.5	19.5
SMU-500M	693	583	428	285	177	131	91	63.7	53.1	24.4
SMU-600M	831	700	513	342	212	157	109	76.4	63.7	29.3
SMU-800M	973	825	615	446	293	216	147	101	84.3	39.2
SMU-1000M	1216	1032	769	558	366	270	184	126	105	49
SMU-1500M	1824	1548	1154	837	549	405	276	190	158	73.4
SMU-2000M	2432	2063	1538	1116	732	540	368	253	211	97.9

2V Cells - Final Voltage 1.70V/cell

OPzS Cell Type	Time									
	5 min	15 min	30 min	1 Hr	2 Hr	3 Hr	5 Hr	8 Hr	10 Hr	24 Hr
SMU-200M	291	246	184	120	73.2	54.1	37.4	25.8	21.6	9.88
SMU-260M	374.2	317.2	236.8	153.9	34.2	69.6	48.2	33.2	27.7	12.7
SMU-300M	436	370	276	179	110	81.1	56.2	38.7	32.3	14.8
SMU-400M	581	493	368	239	146	108	74.9	51.6	43.1	19.8
SMU-500M	727	616	460	299	183	135	93.6	64.5	53.9	24.7
SMU-600M	872	739	552	359	220	162	112	77.4	64.7	29.6
SMU-800M	1031	877	667	473	304	221	150	103	85	39.5
SMU-1000M	1289	1096	834	591	380	276	187	128	106	49.4
SMU-1500M	1933	1644	1251	887	570	415	281	192	159	74.1
SMU-2000M	2578	2192	1668	1182	760	553	374	256	213	98.8

2V Cells - Final Voltage 1.65V/cell

OPzS Cell Type	Time									
	5 min	15 min	30 min	1 Hr	2 Hr	3 Hr	5 Hr	8 Hr	10 Hr	24 Hr
SMU-200M	311	263	200	125	76	55.7	37.8	26.3	21.9	9.92
SMU-260M	*	*	*	*	*	*	*	*	*	*
SMU-300M	467	394	300	188	114	83.5	56.6	39.4	32.8	14.9
SMU-400M	622	526	400	250	152	111	75.5	52.6	43.8	19.8
SMU-500M	778	657	500	313	190	139	94.4	65.7	54.7	24.8
SMU-600M	933	789	600	376	228	167	113	78.8	65.6	29.8
SMU-800M	1097	927	730	498	315	231	154	104	86.4	39.7
SMU-1000M	1371	1158	912	622	394	289	192	130	108	49.6
SMU-1500M	2057	1737	1368	933	590	434	288	195	162	74.4
SMU-2000M	2743	2317	1824	1244	787	579	384	260	216	99.2

2V Cells - Final Voltage 1.60V/cell

OPzS Cell Type	Time									
	5 min	15 min	30 min	1 Hr	2 Hr	3 Hr	5 Hr	8 Hr	10 Hr	24 Hr
SMU-200M	337	282	209	132	77.8	57.1	38.7	26.6	22.1	9.96
SMU-260M	433.3	362.9	268.7	169.9	100.1	76.5	49.8	34.3	28.5	12.8
SMU-300M	505	423	313	198	117	85.6	58.1	40	33.2	14.9
SMU-400M	673	564	418	264	156	114	77.4	53.3	44.2	19.9
SMU-500M	842	705	522	330	195	143	96.8	66.6	55.3	24.9
SMU-600M	1010	846	626	396	233	171	116	79.9	66.4	29.9
SMU-800M	1170	984	800	527	324	238	156	105	86.9	40.3
SMU-1000M	1463	1231	1000	659	405	297	194	131	109	50.3
SMU-1500M	2194	1846	1500	989	608	446	292	197	163	75.5
SMU-2000M	2925	2461	1900	1318	810	585	389	262	217	101

*please inquire if specific data is required for this cell.

Standards

Compliant with international standard IEC 896/2

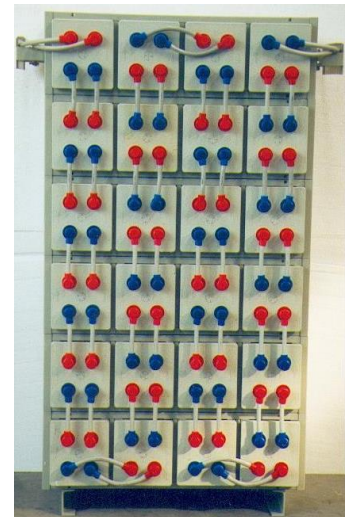
Classified as long life according to Eurobat Guide 1999

Approved as non-hazrdous cargo for land, sea and air transportation

All cells are proven to 100% of rate C10 capacity prior to dispatch

Racks

Standard racks are available in multiple configurations for 24V, 48V and 120V systems. Custom racks can be provided to accommodate almost any requirements, including seismic. Please let us know what your exact requirements are and we will suggest a rack solution that fits your needs.



Six layer installation of SMU-600M cells for 48V system